



HLD series - Single stage hydraulic bolt tensioner

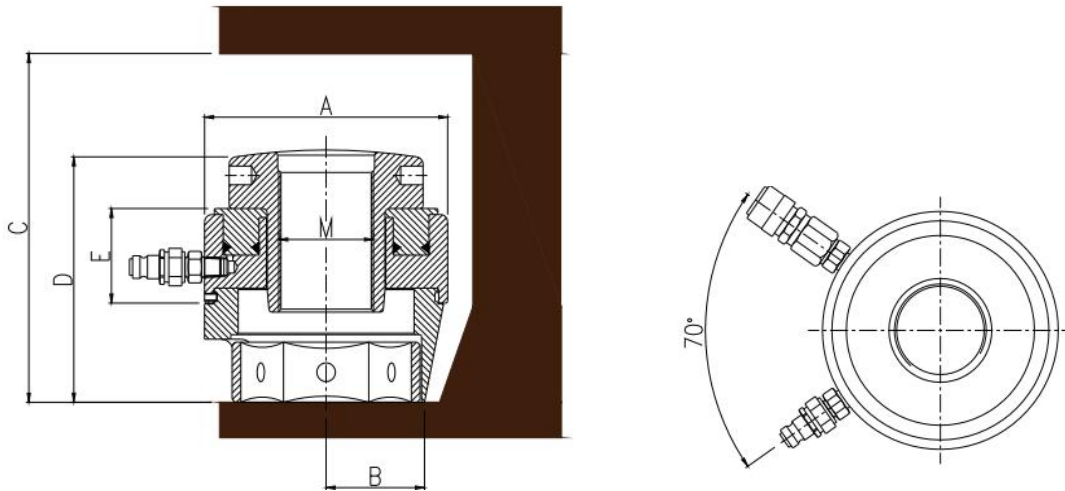


- *Maximum working pressure 150Mpa
- *Compact design and easy maintenance
- *Small size and light weight
- *Easy to replace the rod
- *Commonly used in petrochemical industry

Application



Dimension



Technical parameters

| Model | Bolt diameter | | Max load KN | Oil pressur e area mm ² | Weig ht Kg | A mm | B mm | C mm | D mm | E mm | F mm |
|-------|---------------|----|----------------|---|------------------|---------|---------|---------|---------|---------|---------|
| | Inch | mm | | | | | | | | | |
| HLD1 | | 16 | 226 | 1506 | 3.5 | 73 | 24 | 110 | 74 | 45 | 49 |
| | 3/4 | 18 | 226 | 1506 | 3.5 | 73 | 24 | 110 | 74 | 45 | 49 |
| | | 20 | 226 | 1506 | 3.5 | 73.5 | 27 | 110 | 74 | 45 | 49.5 |
| | 7/8 | 22 | 226 | 1506 | 3 | 73.5 | 27 | 115 | 74 | 45 | 53 |
| | 1 | 24 | 226 | 1506 | 3 | 73.5 | 30 | 125 | 78 | 45 | 58.5 |
| | 1 1/8 | 27 | 226 | 1506 | 3 | 73.5 | 32 | 130 | 78 | 45 | 63.5 |
| HLD2 | | 30 | 455 | 3031 | 5 | 102 | 30 | 150 | 90 | 54 | 69 |
| | 1 1/4 | 33 | 455 | 3031 | 5 | 102 | 34 | 150 | 90 | 54 | 72 |
| | 1 3/8 | 36 | 455 | 3031 | 5 | 102 | 36 | 160 | 95 | 54 | 78 |
| | 1 1/2 | 39 | 455 | 3031 | 5 | 102 | 38 | 170 | 100 | 54 | 80 |
| HLD3 | 1 1/2 | 39 | 803 | 5357 | 9 | 133 | 42 | 175 | 95 | 56 | 83.5 |
| | 1 5/8 | 42 | 803 | 5357 | 9 | 133 | 42 | 185 | 100 | 56 | 92.5 |
| | 1 3/4 | 45 | 803 | 5357 | 9 | 133 | 44 | 195 | 103 | 56 | 98 |
| | 1 7/8 | 48 | 803 | 5357 | 9 | 133 | 46 | 205 | 107 | 56 | 101 |
| | 2 | 52 | 803 | 5357 | 9 | 133 | 48 | 210 | 112 | 56 | 106 |
| HLD4 | 1 7/8 | 48 | 1288 | 8591 | 15 | 163 | 50 | 205 | 105 | 58 | 108 |
| | 2 | 52 | 1288 | 8591 | 15 | 163 | 52 | 215 | 108 | 58 | 108 |
| | 2 1/4 | 56 | 1288 | 8591 | 15 | 163 | 54 | 235 | 117 | 58 | 118.5 |
| | | 60 | 1288 | 8591 | 15 | 163 | 54 | 238 | 120 | 58 | 127 |
| | 2 1/2 | 64 | 1288 | 8591 | 15 | 163 | 58 | 254 | 129 | 58 | 130.5 |
| HLD5 | 2 1/2 | 64 | 1978 | 13188 | 25 | 193 | 64 | 254 | 125 | 60 | 130.5 |
| | | 68 | 1978 | 13188 | 25 | 193 | 72 | 258 | 130 | 60 | 138 |
| | 2 3/4 | 72 | 1978 | 13188 | 25 | 193 | 72 | 258 | 130 | 60 | 143 |
| | 3 | 76 | 1978 | 13188 | 25 | 193 | 74 | 258 | 141 | 60 | 153 |