



## DLD series - Single stage hydraulic bolt tensioner

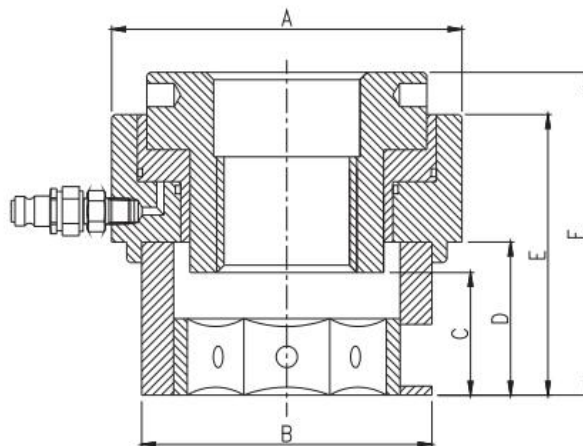


- \*Maximum working pressure 150Mpa
- \*Mechanical return
- \*Replaceable tensioning rod
- \*Red overstroke warning line
- \*Polishing surface treatment

### Application



### Dimension



### Technical parameters

Website: [www.TorcStark.com](http://www.TorcStark.com)

Email: [TorcStark@gmail.com](mailto:TorcStark@gmail.com)

Tel: +86-531 8289 9663

Model	Bolt size mm	Max load KN	Dimension (mm)						Stroke mm	Weight Kg
			A	B	C	D	E	F		
DLD0	M 20	338	85	55	23	25	74	86	8	3.5
	M 22			59	25	27	76	88		
	M 24			66	27	29	78	90		
DLD1	M 24	486	109	66	27	29	90	105	8	5.5
	M 27			72	30	32	93	108		
	M 30			78	33	35	96	111		
	M 33			85	36	38	99	114		
	M 36			90	39	41	102	117		
DLD2	M 33	814	132	85	36	44	111	127	8	8
	M 36			94	39	47	116	130		
	M 39			98	42	50	119	133		
	M 42			105	45	53	122	136		
DLD3	M 39	989	150	98	41	51	122	135	10	12
	M 42			105	44	54	125	138		
	M 45			110	47	57	128	141		
	M 48			125	50	60	131	144		
DLD4	M 52	1413	174	132	53	56	132	145	10	17
	M 56			135	59	60	136	149		
DLD5	M 56	1649	198	135	59	60	138	154	12	21
	M 60			144	63	65	143	159		
	M 64			150	67	69	147	163		
	M 68			158	71	74	152	168		
DLD6	M 72	2131	222	165	75	77	167	185	12	26
	M 76			170	79	81	175	193		
DLD7	M 76	2544	252	170	79	81	167	197	12	32
	M 80			175	83	85	172	201		
	M 85			185	88	90	176	206		
	M 90			205	93	95	181	211		
DLD8	M 95	3101	282	215	98	100	189	224	12	38
	M 100			235	103	105	194	229		
DLD9	M 105	3793	318	240	108	110	203	238	12	52
	M 110			250	113	115	208	243		
	M 115			260	118	120	213	248		
DLD10	M 115	4936	360	260	120	120	261	297	15	87
	M 120			270	125	125	266	302		
	M 125			285	140	130	271	307		